

roster

A publication of the AIP Statistical Research Center

September 2019

Revised October 2019

stats@aip.org

301.209.3070

Roster of Physics Departments with Enrollment and Degree Data, 2018

Results from the 2018 Survey of Enrollments and Degrees

Starr Nicholson and Patrick J. Mulvey

There were 8,946 physics bachelor's degrees conferred in the class of 2018. This is not just an all-time high, but a continuation of 19 years of steady increases in the number of bachelors conferred at US physics departments (see figure on page 19).

The number of physics PhDs conferred at US institutions has also been experiencing a steady upward trend since 2004. The 1,914 physics PhDs conferred in the class of 2018 represents another all-time high for physics PhDs. (see figure on page 19).

Total Physics Degrees Academic Year 2017-2018	
Bachelors	8,946
Exiting Masters	935
PhDs	1,914

Total Physics Enrollments Fall 2018	
Juniors	11,004
Seniors	14,383
1st Year Grad	3,242
Total Grad	16,078

Number of Departments by Highest Degree Offered Academic Year 2017-2018	
Bachelors	503
Masters	57
PhD	201
Total Departments	761

This roster contains detailed data from the annual Survey of Enrollments and Degrees. The survey was conducted in the fall of 2018 and covers all degree-granting physics departments in the United States.

Of the 761 degree-granting physics departments, 684 (90%) contributed to the data supplied in this year's roster. The totals above include data from responding departments as well as estimated data for the 77 non-responding departments.

Trend in physics enrollments and degrees, academic years 2007 to 2019.							
Academic Year	Number of physics degrees			Undergraduate physics major enrollments		Graduate physics student enrollments	
	Bachelors	Exiting Masters	PhDs	Juniors	Seniors	1 st -year	Total
2007-08	5,767	790	1,499	7,444	9,037	3,069	14,326
2008-09	5,908	838	1,554	7,329	9,312	2,908	14,538
2009-10	6,017	794	1,558	7,804	9,669	3,089	14,808
2010-11	6,296	735	1,688	8,851	10,567	3,164	15,182
2011-12	6,778	801	1,762	9,236	11,399	3,108	15,152
2012-13	7,325	801	1,743	9,566	12,144	3,294	15,532
2013-14	7,521	870	1,803	10,229	12,855	3,157	15,530
2014-15	8,058	891	1,860	10,611	13,542	3,232	15,812
2015-16	8,440	940	1,819	11,076	13,915	3,210	15,595
2016-17	8,633	930	1,862	11,141	14,277	3,264	15,849
2017-18	8,946	935	1,914	11,015	14,442	3,316	15,961
2018-19				11,004	14,383	3,242	16,078

Notations used in this roster:

- m* Masters is the department’s highest physics degree offered (N=57).
- p* PhD is the department’s highest physics degree offered (N=201).
- s* This institution also has a separate astronomy department (N=36).
- c* This is a combined department, offering degrees in both physics and astronomy (N=45). Data concerning the astronomy portion of their program can be found in the “Roster of Astronomy Departments, 2018”.
- GRADUATE ONLY Department has no undergraduate program in physics (N=8).
- FIRST YEAR This column includes graduate students who were new to the department in the fall of 2018 as well as students who entered the department in the previous winter, spring and summer.
- EXITING MASTERS This column reflects the number of students who left the department with a master’s degree.
- FIRST TERM INTRODUCTORY COURSE ENROLLMENTS This column represents the number of students who took their first term of introductory level physics, astronomy or physical science. Departments were instructed not to include enrollments for courses that were a continuation of a sequence.
- Data for this field were not provided.

INSTITUTION	2017-18 FIRST-TERM INTRODUCTORY COURSE ENROLLMENTS		FALL 2018 UNDERGRADUATE MAJORS		FALL 2018 GRADUATE STUDENTS			2017-18 PHYSICS DEGREES		
	PHYSICS	PHYSICAL SCI & ASTRONOMY	JR	SR	TOTAL	FOREIGN	FIRST YEAR	BACHELORS	EXITING MASTERS	PHDS
ALABAMA										
<i>p</i> Alabama A&M U	DATA NOT PROVIDED									
<i>p</i> AL-U of, Birmingham	952	1022	12	25	32	16	5	7	1	2
<i>p</i> AL-U of, Huntsville	668	150	35	37	33	9	8	16	4	0
<i>p</i> AL-U of, Tuscaloosa	1357	658	30	54	56	41	15	13	4	7
<i>p</i> Auburn U	2138	50	15	23	52	19	10	10	1	6
Birmingham-Southern Coll	77	18	5	11				4		
North Alabama-U of	80	25	5	1				1		
Samford U	111	35	4	4				6		
South Alabama-U of	835	56	5	6				4		
Troy U	217	612	8	7				2		
Tuskegee U	284	21	5	1				5		
ALASKA										
<i>p</i> Alaska-U of, Fairbanks	265	47	5	7	23	6	5	3	1	1
ARIZONA										
<i>p</i> Arizona State U	<i>s</i> 3580	112	67	94	93	38	24	62	14	13
<i>p</i> Arizona-U of	<i>s</i> 1662	0	66	69	113	46	33	23	2	12
Embry-Riddle Aeronautical U	<i>c</i> 639	29	20	15				9		
<i>m</i> Northern Arizona U	<i>c</i> 634	489	23	44	13	3	7	20	5	
ARKANSAS										
Arkansas State U	321	544	2	3				5		
Arkansas Tech U	280	376	4	6				5		
<i>p</i> AR-U of, Fayetteville	3799	743	25	30	57	33	11	17	1	7
AR-U of, Little Rock	585	180	1	5				2		
AR-U of, Pine Bluff	269	391	1	0				3		
Central Arkansas-U of	812	790	16	16				11		
Harding U	167	0	0	1				3		
Henderson State U	133	340	2	2				1		
Hendrix Coll	85	40	8	13				12		
Ouachita Baptist U	39	27	4	4				3		
Southern Arkansas U	276	331	3	2				6		
CALIFORNIA										
Azusa Pacific U	189	302	2	7				6		
Biola U	181	146	2	1				4		
<i>p</i> Cal Inst of Tech	<i>s</i> 213	0	39	25	134	75	24	33	4	29
Cal Lutheran U	160	116	10	4				6		
Cal Poly St U-San Luis Obispo	3028	552	39	87				38		
Cal St Poly U-Pomona	1804	72	44	37				39		
Cal St U-Bakersfield	DATA NOT PROVIDED									
Cal St U-Channel Islands	DATA NOT PROVIDED									
Cal St U-Chico	1558	345	11	22				6		
Cal St U-Dominguez Hills	DATA NOT PROVIDED									
<i>m</i> Cal St U-Fullerton	2447	855	22	56	23	0	7	24	4	
Cal St U-East Bay	784	350	7	10				8		
<i>m</i> Cal St U-Long Beach	2931	1006	27	100	59	8	16	38	14	
<i>m</i> Cal St U-Los Angeles	610	200	46	12	35	3	6	5	14	
<i>m</i> Cal St U-Northridge	—	—	27	27	42	0	14	15	14	
Cal St U-San Bernardino	872	91	14	34				19		
Cal St U-San Marcos	1395	445	20	47				8		

INSTITUTION	2017-18 FIRST-TERM INTRODUCTORY COURSE ENROLLMENTS		FALL 2018 UNDERGRADUATE MAJORS		FALL 2018 GRADUATE STUDENTS			2017-18 PHYSICS DEGREES		
	PHYSICS	PHYSICAL SCI & ASTRONOMY	JR	SR	TOTAL	FOREIGN	FIRST YEAR	BACHELORS	EXITING MASTERS	PHDS
CALIFORNIA CONTINUED										
Cal St U-Stanislaus	514	230	15	18				8		
<i>p</i> CA-U of, Berkeley	<i>s</i> 2556	0	190	122	278	86	44	103	0	39
<i>p</i> CA-U of, Davis	3380	721	85	63	171	57	26	43	3	25
<i>p</i> CA-U of, Irvine	3215	809	76	81	139	25	22	43	9	19
<i>p</i> CA-U of, Los Angeles	<i>c</i> 2674	1502	75	128	160	36	29	73	2	18
<i>p</i> CA-U of, Merced	827	24	15	16	53	23	13	10	0	9
<i>p</i> CA-U of, Riverside	2387	1351	48	55	144	70	34	17	5	13
<i>p</i> CA-U of, San Diego	3244	261	104	147	175	75	49	66	2	25
<i>p</i> CA-U of, Santa Barbara	2079	573	208	226	144	44	43	163	2	32
<i>p</i> CA-U of, Santa Cruz	<i>s</i> 3520	200	119	140	73	7	13	56	1	7
Chapman U	DATA NOT PROVIDED									
Claremont Colleges	201	0	15	15				8		
<i>m</i> Fresno State U	—	—	18	21	16	—	11	10	—	
Harvey Mudd Coll	232	0	13	16				21		
Humboldt State U	495	220	22	25				15		
La Sierra U	165	0	1	2				0		
La Verne-U of	250	138	4	3				3		
Loyola Marymount U	248	117	8	7				8		
<i>p</i> Naval Postgrad School	76	0	GRADUATE ONLY		57	11	27		17	2
Occidental Coll	134	17	6	14				15		
Pacific Union Coll	80	63	1	3				2		
Pacific-U of the	340	8	2	6				2		
Pepperdine U	90	40	2	11				22		
Point Loma Nazarene U	—	—	9	22				14		
Pomona Coll	74	87	17	14				24		
Redlands-U of	84	18	12	13				12		
Sacramento State U	1321	882	18	45				17		
St. Marys Coll of CA	DATA NOT PROVIDED									
<i>m</i> San Diego St U	<i>s</i> 4055	0	20	41	29	2	13	12	15	
San Diego-U of	0	0	—	11				12		
<i>m</i> San Francisco St U	1647	1381	45	42	60	16	19	9	4	
San Francisco-U of	223	320	16	7				3		
<i>m</i> San Jose State U	1355	174	13	33	29	—	8	12	6	
Santa Clara U	474	131	15	20				9		
Sonoma State U	391	828	6	28				10		
<i>p</i> Southern Cal-U of (USC)	<i>c</i> 1182	520	26	22	83	49	15	13	1	9
<i>p</i> Stanford U	619	162	23	40	210	80	33	29	3	22
<i>p</i> Stanford U (Appl Phy)	GRADUATE ONLY				141	—	24		2	11
Westmont Coll	118	102	7	10				4		
Whittier Coll	92	59	8	5				3		
COLORADO										
Colorado Coll	277	226	15	21				19		
Colorado Mesa U	568	142	13	6				4		
<i>p</i> Colorado School of Mines	1125	37	42	80	69	9	25	70	6	10
<i>p</i> Colorado St U-Fort Collins	1974	455	32	43	68	8	15	13	0	10
Colorado St U-Pueblo	168	133	4	4				1		
<i>p</i> Colorado-U of, Boulder	<i>s</i> 3275	0	149	202	264	81	52	69	4	29
<i>p</i> Colorado-U of, Colo Spgs	524	180	19	30	40	5	14	12	0	2
Colorado-U of, Denver	—	—	18	43				5		
<i>p</i> Denver-U of	691	45	7	14	20	3	6	7	3	2
Fort Lewis Coll	151	29	3	6				3		
Metropolitan St U of Denver	DATA NOT PROVIDED									
Northern Colorado-U of	217	690	21	20				14		
US Air Force Academy	1016	0	17	10				13		

INSTITUTION	2017-18 FIRST-TERM INTRODUCTORY COURSE ENROLLMENTS		FALL 2018 UNDERGRADUATE MAJORS		FALL 2018 GRADUATE STUDENTS			2017-18 PHYSICS DEGREES			
	PHYSICS	PHYSICAL SCI & ASTRONOMY	JR	SR	TOTAL	FOREIGN	FIRST YEAR	BACHELORS	EXITING MASTERS	PHDS	
CONNECTICUT											
Central Conn St U	192	64	—	—				6			
Connecticut Coll	95	48	7	6				2			
<i>p</i> Connecticut-U of	2180	219	49	82	79	28	17	31	5	11	
Fairfield U	718	207	5	2				2			
Hartford-U of	585	47	3	1				1			
<i>m</i> Southern Conn St U	722	0	13	21	7	0	1	10	4		
Trinity Coll	74	0	8	4				9			
<i>p</i> Wesleyan U	<i>s</i> —	—	34	14	12	—	6	18	2	6	
<i>p</i> Yale U	<i>s</i> 994	0	29	38	103	47	15	22	—	—	
<i>p</i> Yale U (Appl Phy)	7	36	2	2	44	24	12	6	1	4	
DELAWARE											
<i>p</i> Delaware State U	491	96	25	27	13	5	4	11	0	2	
<i>p</i> Delaware-U of	1299	342	17	24	78	54	13	21	2	12	
DISTRICT OF COLUMBIA											
American U	310	187	4	6				8			
<i>p</i> Catholic U			DATA NOT PROVIDED								
<i>p</i> George Washington U	<i>c</i> 626	484	12	12	—	—	—	7	0	6	
<i>p</i> Georgetown U	257	0	15	22	31	9	3	16	0	1	
<i>p</i> Howard U	243	16	7	11	16	10	3	3	0	0	
FLORIDA											
Ave Maria U			DATA NOT PROVIDED								
<i>p</i> Central Florida-U of	1647	1509	65	103	101	42	19	33	2	12	
Eckerd Coll	115	0	8	2				5			
<i>p</i> Embry-Riddle Aeronautical U	<i>c</i> 1247	588	25	45	29	8	4	21	7	5	
<i>p</i> Florida A&M U	415	277	6	5	17	10	3	2	2	1	
<i>p</i> Florida Atlantic U			DATA NOT PROVIDED								
<i>p</i> Florida Inst of Tech	<i>c</i> 488	72	9	15	15	7	6	4	2	1	
<i>p</i> Florida International U			DATA NOT PROVIDED								
<i>p</i> Florida State U	1959	921	28	26	148	67	26	13	2	12	
<i>p</i> Florida-U of	<i>s</i> 3865	0	39	80	133	70	24	34	0	18	
Jacksonville U	140	70	3	1				2			
<i>p</i> Miami-U of			DATA NOT PROVIDED								
New Coll of Florida	60	37	6	3				3			
North Florida-U of	504	595	51	21				24			
Rollins Coll	170	0	7	4				9			
<i>p</i> South Florida-U of	6036	908	91	108	61	30	9	40	0	16	
Stetson U	102	64	8	7				9			
West Florida-U of	556	91	13	9				11			
GEORGIA											
Agnes Scott Coll	<i>c</i> 65	40	4	1				4			
Augusta U	421	299	7	18				7			
Berry Coll	141	39	7	5				3			
<i>m</i> Clark-Atlanta U	219	259	1	3	6	5	3	1	9		
Covenant Coll	36	44	0	0				2			
<i>p</i> Emory U	991	176	27	22	47	26	14	21	2	6	
Georgia Coll	454	519	15	22				27			
<i>p</i> Georgia Inst of Tech	3416	187	51	86	130	52	16	34	0	17	
Georgia Southern U	31	4	12	14				14			
<i>p</i> Georgia State U	<i>c</i> 1517	831	40	44	41	31	6	20	2	6	
<i>p</i> Georgia-U of	—	—	—	—	47	27	8	—	4	2	

INSTITUTION	2017-18 FIRST-TERM INTRODUCTORY COURSE ENROLLMENTS		FALL 2018 UNDERGRADUATE MAJORS		FALL 2018 GRADUATE STUDENTS			2017-18 PHYSICS DEGREES		
	PHYSICS	PHYSICAL SCI & ASTRONOMY	JR	SR	TOTAL	FOREIGN	FIRST YEAR	BACHELORS	EXITING MASTERS	PHDS
GEORGIA CONTINUED										
Kennesaw State U	1000	0	13	19				8		
Mercer U	428	48	1	3				1		
Morehouse Coll	307	364	10	15				13		
North Georgia-U of	299	217	30	25				16		
Oglethorpe U	69	15	7	2				—		
Piedmont Coll			DATA NOT PROVIDED							
Spelman Coll	296	13	5	4				3		
Valdosta State U	c 167	301	5	6				1		
West Georgia-U of	268	1079	8	5				4		
HAWAII										
Hawaii-U of, Hilo	c 101	64	5	13				4		
p Hawaii-U of, at Manoa	s 393	183	6	18	41	8	8	8	1	3
IDAHO										
Coll of Idaho	49	40	2	4				9		
Boise State U	1620	121	19	37				27		
Brigham Young U-Idaho	1018	67	32	43				17		
p Idaho State U	80	0	—	—	11	4	3	22	0	2
p Idaho-U of			DATA NOT PROVIDED							
Northwest Nazarene U	55	0	2	2				2		
ILLINOIS										
Augustana Coll	122	76	7	15				13		
Benedictine U	222	331	2	2				2		
Bradley U	309	129	3	6				1		
Chicago State U	19	95	5	4				2		
p Chicago-U of	s 599	0	62	54	192	84	27	62	0	22
m DePaul U	458	27	14	19	10	1	5	6	2	
Eastern Illinois U	296	100	13	6				4		
Elmhurst Coll	52	40	2	3				5		
Greenville U			DATA NOT PROVIDED							
Illinois Coll	50	6	4	3				8		
p Illinois Inst of Tech	787	32	18	16	88	22	25	10	12	4
Illinois State U	1896	165	26	37				17		
p IL-U of, Chicago	1128	163	9	21	87	57	13	14	3	9
p IL-U of, Urbana/Champaign	s 6646	0	127	249	289	125	41	164	5	45
Illinois Wesleyan U	126	65	18	18				13		
Knox Coll	131	32	10	8				4		
Lake Forest Coll	128	0	8	4				8		
Lewis U	210	35	12	19				20		
Loyola U Chicago	804	46	20	18				23		
Millikin U			DATA NOT PROVIDED							
Monmouth Coll			DATA NOT PROVIDED							
North Central Coll	60	102	20	3				8		
North Park U			DATA NOT PROVIDED							
Northeastern Illinois U	88	141	10	7				5		
p Northern Illinois U	1311	268	10	15	54	21	8	16	5	5
p Northwestern U	698	397	11	24	105	—	21	17	6	11
Principia Coll			DATA NOT PROVIDED							
p Sthrn IL U-Carbondale			DATA NOT PROVIDED							
Sthrn IL U-Edwardsville			DATA NOT PROVIDED							
m Western Illinois U	351	368	7	6	19	16	7	8	12	
Wheaton Coll	191	122	4	12				8		

INSTITUTION	2017-18 FIRST-TERM INTRODUCTORY COURSE ENROLLMENTS		FALL 2018 UNDERGRADUATE MAJORS		FALL 2018 GRADUATE STUDENTS			2017-18 PHYSICS DEGREES		
	PHYSICS	PHYSICAL SCI & ASTRONOMY	JR	SR	TOTAL	FOREIGN	FIRST YEAR	BACHELORS	EXITING	
									MASTERS	PHDS
INDIANA										
Anderson U	41	32	1	0				1		
<i>m</i> Ball State U	545	725	11	10	15	5	5	3	7	
Butler U	239	111	13	11				7		
DePauw U	110	55	4	2				5		
Earlham Coll			DATA NOT PROVIDED							
Evansville-U of	194	33	2	5				4		
Goshen Coll	—	—	—	3				2		
Hanover Coll	36	40	3	—				1		
Indiana State U	558	140	1	1				5		
<i>p</i> Indiana U-Bloomington	<i>s</i> 1155	907	18	26	104	21	18	30	6	10
Indiana U-South Bend	160	248	12	7				3		
<i>p</i> Indiana U Purdue U-Indpls	545	391	11	15	25	9	6	12	1	3
Indianapolis-U of	343	24	2	3				3		
Manchester U	64	31	0	5				0		
<i>p</i> Notre Dame-U of	926	637	32	28	113	35	22	30	1	14
Purdue U-Ft Wayne	552	228	8	21				8		
Purdue U-Northwest	207	125	5	11				6		
<i>p</i> Purdue U-West Lafayette	3577	189	42	57	151	111	30	24	5	23
Rose-Hulman Inst of Tech	453	52	11	5				7		
St. Marys Coll	162	32	8	3				1		
Southern Indiana-U of	240	48	4	3				15		
Taylor U	148	17	12	14				5		
Valparaiso U			DATA NOT PROVIDED							
Wabash Coll	57	0	5	3				9		
IOWA										
Buena Vista U	50	30	2	0				0		
Central Coll	67	30	2	4				8		
Coe Coll	138	81	19	20				18		
Cornell Coll	59	0	2	4				4		
Dordt Coll	94	20	1	0				1		
Drake U	<i>c</i>		DATA NOT PROVIDED							
Grinnell Coll	205	0	14	19				19		
<i>p</i> Iowa State U	<i>c</i> 2210	724	35	33	83	58	4	8	2	10
<i>p</i> Iowa-U of	<i>c</i> 1585	851	20	27	60	17	14	9	1	13
Luther Coll	92	24	5	9				8		
Morningside Coll	75	35	3	3				2		
Northern Iowa-U of	440	0	11	17				11		
Simpson Coll	71	0	4	4				5		
Wartburg Coll	62	10	5	3				1		
KANSAS										
Baker U	42	14	2	3				3		
Benedictine Coll	<i>c</i>		DATA NOT PROVIDED							
<i>m</i> Emporia State U			DATA NOT PROVIDED							
Fort Hays State U	94	240	4	14				2		
<i>p</i> Kansas State U	1766	36	22	34	62	43	12	9	3	4
<i>p</i> Kansas-U of	<i>c</i> 2422	110	28	50	54	24	13	15	0	11
Kansas Wesleyan U	17	0	1	4				2		
<i>m</i> Pittsburg State U	282	440	5	5	4	1	1	2	5	
Washburn U of Topeka	78	149	6	4				0		
Wichita State U	645	188	11	20				3		

INSTITUTION	2017-18 FIRST-TERM INTRODUCTORY COURSE ENROLLMENTS		FALL 2018 UNDERGRADUATE MAJORS		FALL 2018 GRADUATE STUDENTS			2017-18 PHYSICS DEGREES		
	PHYSICS	PHYSICAL SCI & ASTRONOMY	JR	SR	TOTAL	FOREIGN	FIRST YEAR	BACHELORS	EXITING MASTERS	PHDS
KENTUCKY										
Bellarmine U	209	102	0	2				5		
Berea Coll	75	20	6	2				2		
Centre Coll	121	0	5	9				6		
Cumberlands-U of the	105	142	3	8				5		
Eastern Kentucky U	550	260	12	6				9		
Georgetown Coll	45	5	4	2				0		
<i>p</i> Kentucky-U of	1901	847	18	34	90	57	14	12	1	10
Kentucky Wesleyan Coll	31	0	0	0				0		
<i>p</i> Louisville-U of	968	608	10	24	39	24	7	12	2	5
Morehead State U	304	0	5	11				11		
Murray State U	375	160	4	5				1		
Northern Kentucky U	46	0	14	18				10		
Thomas More Coll			DATA NOT PROVIDED							
Transylvania U	70	0	3	4				3		
<i>m</i> Western Kentucky U	723	624	3	12	4	3	2	6	2	
LOUISIANA										
Dillard U			DATA NOT PROVIDED							
Grambling State U	265	274	4	12				5		
<i>p</i> LA St U-Baton Rouge	512	850	20	32	113	47	20	17	3	4
LA St U-Shreveport			DATA NOT PROVIDED							
<i>m</i> Louisiana Tech U			DATA NOT PROVIDED							
<i>m</i> Louisiana-U of, at Lafayette	1169	332	5	11	12	10	5	1	7	
Loyola U-New Orleans	319	25	14	6				6		
<i>p</i> New Orleans-U of			DATA NOT PROVIDED							
Southeastern Louisiana U	347	252	4	7				2		
<i>m</i> Southern U & A&M Coll	—	—	4	4	5	3	3	0	2	
<i>p</i> Tulane U	610	0	29	17	38	21	9	21	1	4
Xavier U of Louisiana			DATA NOT PROVIDED							
MAINE										
Bates Coll	202	198	14	16				12		
Bowdoin Coll	71	48	12	23				15		
Colby Coll	165	133	19	17				21		
<i>p</i> Maine-U of	840	430	21	10	26	4	4	14	2	1
Southern Maine-U of	343	252	5	4				3		
MARYLAND										
Frostburg State U	259	48	1	5				3		
Goucher Coll	41	43	5	7				4		
<i>p</i> Johns Hopkins U	<i>c</i> 801	75	19	24	88	47	17	22	1	15
Loyola U of MD	285	372	5	2				2		
<i>p</i> Maryland-U of, Balt Cnty	1245	188	43	51	47	21	11	19	5	4
<i>p</i> Maryland-U of, Coll Park	<i>s</i> 2007	0	63	117	251	133	36	62	3	32
McDaniel Coll	26	186	2	6				7		
Morgan State U	497	762	7	6				3		
Notre Dame of MD U	23	8	4	3				1		
St. Marys College of MD	64	94	14	16				5		
Salisbury U	200	114	23	16				27		
<i>m</i> Towson U	1386	838	15	40	17	2	3	13	5	
US Naval Academy	1077	12	33	34				13		
Washington Coll	131	32	15	12				4		

INSTITUTION	2017-18 FIRST-TERM INTRODUCTORY COURSE ENROLLMENTS		FALL 2018 UNDERGRADUATE MAJORS		FALL 2018 GRADUATE STUDENTS			2017-18 PHYSICS DEGREES			
	PHYSICS	PHYSICAL SCI & ASTRONOMY	JR	SR	TOTAL	FOREIGN	FIRST YEAR	BACHELORS	EXITING MASTERS	PHDS	
MASSACHUSETTS											
Amherst Coll	DATA NOT PROVIDED										
Bard Coll at Simon's Rock	38	18	3	3				1			
<i>p</i> Boston Coll	352	0	18	11	44	24	8	14	0	5	
<i>p</i> Boston U	<i>s</i> 1108	0	34	36	81	49	28	32	1	14	
<i>p</i> Brandeis U	195	151	13	16	50	24	8	21	0	5	
Bridgewater State U	520	186	9	24				7			
<i>p</i> Clark U	162	102	7	19	10	7	3	10	1	2	
Eastern Nazarene Coll	DATA NOT PROVIDED										
Gordon Coll	55	0	9	8				3			
<i>p</i> Harvard U	<i>s</i> 401	0	64	49	233	99	37	61	6	29	
<i>p</i> Harvard U (Appl Sci)	61	0	GRADUATE ONLY		109	45	26		0	20	
Holy Cross-Coll of the	158	25	19	16				15			
MA Coll of Liberal Arts	93	23	3	6				2			
<i>p</i> Mass Inst of Tech (MIT)	1099	0	73	99	266	127	43	69	1	34	
<i>p</i> MA-U of, Amherst	<i>s</i> 1787	0	61	53	92	58	20	46	1	11	
<i>p</i> MA-U of, Boston	563	112	14	27	27	7	10	5	5	0	
<i>m</i> MA-U of, Dartmouth	549	534	11	9	19	9	7	9	10		
<i>p</i> MA-U of, Lowell	1418	533	27	29	68	26	22	16	11	6	
Merrimack College	178	17	0	0				2			
Mount Holyoke Coll	<i>s</i> 86	0	16	19				9			
<i>p</i> Northeastern U	1381	107	26	52	90	62	18	26	2	9	
Simmons Coll	—	—	1	—				1			
Smith Coll	<i>s</i> 102	0	12	4				13			
Suffolk U	356	236	3	6				2			
Stonehill Coll	<i>c</i>	DATA NOT PROVIDED									
<i>p</i> Tufts U	<i>c</i> 458	235	19	21	33	14	7	20	1	5	
Wellesley Coll	<i>s</i> 136	0	19	22				13			
Wheaton Coll	DATA NOT PROVIDED										
Williams Coll	<i>s</i> 130	0	17	13				9			
<i>p</i> Worcester Polytech Inst	1947	0	14	15	19	12	1	13	4	1	
MICHIGAN											
Adrian Coll	68	0	0	7				1			
Albion Coll	125	46	2	1				5			
Alma Coll	82	0	2	3				1			
Andrews U	171	37	3	5				4			
Calvin Coll	260	92	7	5				4			
<i>m</i> Central Michigan U	766	875	8	13	11	8	4	7	9		
<i>m</i> Eastern Michigan U	641	1012	10	15	15	2	5	6	3		
Grand Valley St U	1934	205	8	9				10			
Hillsdale Coll	172	0	0	3				1			
Hope Coll	267	45	4	5				5			
Kalamazoo Coll	82	0	—	—				17			
Kettering U (Appl Phys)	732	0	14	31				10			
Lawrence Technological U	161	24	1	2				2			
<i>p</i> Michigan State U	<i>c</i> 3330	1934	100	90	170	42	32	47	2	19	
<i>p</i> Michigan Technological U	1341	117	17	7	47	29	11	10	3	4	
<i>p</i> Michigan-U of, Ann Arbor	<i>s</i> 1425	0	55	79	149	56	25	66	1	10	
<i>p</i> Michigan-U of, Ann Arbor (Appl Phys)	GRADUATE ONLY				88	15	11		0	14	
Michigan-U of, Dearborn	554	445	5	8				1			
Michigan-U of, Flint	332	106	8	11				4			
Northern Michigan U	367	82	9	6				5			
<i>p</i> Oakland U	1213	295	12	16	16	12	4	5	1	1	
Saginaw Valley St U	425	200	4	3				5			
<i>p</i> Wayne State U	<i>c</i> 1564	1130	35	43	52	25	8	21	2	10	
<i>p</i> Western Michigan U	1047	166	16	15	31	22	10	7	3	0	

INSTITUTION	2017-18 FIRST-TERM INTRODUCTORY COURSE ENROLLMENTS		FALL 2018 UNDERGRADUATE MAJORS		FALL 2018 GRADUATE STUDENTS			2017-18 PHYSICS DEGREES		
	PHYSICS	PHYSICAL SCI & ASTRONOMY	JR	SR	TOTAL	FOREIGN	FIRST YEAR	BACHELORS	EXITING MASTERS	PHDS
MINNESOTA										
Augsburg U	125	100	3	7				7		
Bethel U	190	64	7	38				28		
Carleton Coll	153	120	14	24				19		
Coll. of St. Benedict / St. John's U	140	74	12	11				20		
Concordia Coll	89	19	7	4				2		
Gustavus Adolphus Coll	78	47	16	19				14		
Hamline U	148	76	8	7				13		
Macalester Coll	—	—	22	8				8		
<i>m</i> Minnesota St U-Mankato	990	504	4	9	9	3	2	4	1	
Minnesota St U-Moorhead	211	364	4	6				9		
<i>m</i> Minnesota-U of, Duluth	1384	499	13	20	17	4	8	7	7	
<i>p</i> Minnesota-U of, Minnpls	3115	1390	25	110	182	78	31	61	8	34
Minnesota-U of, Morris	105	34	4	1				3		
St. Cloud State U	DATA NOT PROVIDED									
St. Mary's U of MN	72	58	2	3				3		
St. Olaf Coll	173	35	25	14				22		
St. Thomas-U of	357	176	11	17				11		
Winona State U	808	96	5	8				3		
MISSISSIPPI										
Jackson State U	DATA NOT PROVIDED									
Millsaps Coll	DATA NOT PROVIDED									
Mississippi Coll	DATA NOT PROVIDED									
<i>p</i> Mississippi State U	1462	585	4	9	31	24	10	4	3	7
<i>p</i> Mississippi-U of	1514	678	7	13	41	26	3	3	6	5
<i>m</i> Sthrn Mississippi-U of	DATA NOT PROVIDED									
Tougaloo Coll	81	0	0	2				0		
MISSOURI										
Central Methodist U	33	78	3	2				0		
Central Missouri-U of	450	16	0	2				0		
Drury U	113	0	5	7				6		
Lincoln U (MO)	35	160	—	4				0		
Missouri Southern St U	DATA NOT PROVIDED									
<i>m</i> Missouri State U	704	758	13	43	18	17	8	7	9	
<i>p</i> Missouri U of Sci & Tech ⁽¹⁾	1074	0	23	29	33	20	5	19	1	7
<i>p</i> MO-U of Columbia	1110	195	16	36	45	—	8	20	0	14
<i>p</i> MO-U of, Kansas City	990	95	12	16	19	5	4	9	3	0
<i>p</i> MO-U of, St. Louis ⁽¹⁾	165	124	13	9	18	7	4	9	1	2
Rockhurst U	149	0	12	18				8		
St. Louis U	566	0	7	11				2		
Southeast Missouri St U	540	397	2	14				0		
Truman State U	337	44	13	9				11		
<i>p</i> Washington U	720	0	13	18	77	45	10	21	0	11
Westminster Coll	DATA NOT PROVIDED									
William Jewell Coll	38	48	4	6				7		
MONTANA										
Carroll Coll	141	35	2	2				0		
<i>p</i> Montana State U	1789	966	21	39	77	10	19	10	7	3
Montana-U of	287	200	15	15				14		

(1) - Students earning a PhD at U of Missouri, St. Louis are in a co-op program with Missouri U of Sci & Tech.

INSTITUTION	2017-18 FIRST-TERM INTRODUCTORY COURSE ENROLLMENTS		FALL 2018 UNDERGRADUATE MAJORS		FALL 2018 GRADUATE STUDENTS			2017-18 PHYSICS DEGREES		
	PHYSICS	PHYSICAL SCI & ASTRONOMY	JR	SR	TOTAL	FOREIGN	FIRST YEAR	BACHELORS	EXITING MASTERS	PHDS
NEBRASKA										
Concordia U-Nebraska	131	19	3	3				2		
<i>m</i> Creighton U	235	36	8	6	19	4	9	14	3	
Doane U	80	38	7	7				5		
Hastings Coll	77	25	6	5				26		
Nebraska-U of, Kearney	107	85	7	1				5		
<i>p</i> Nebraska-U of, Lincoln	1483	669	23	35	86	58	12	18	2	9
Nebraska-U of, Omaha	1544	1168	14	18				4		
Nebraska Wesleyan U	73	80	6	10				4		
Union Coll	24	8	0	0				0		
NEVADA										
<i>p</i> Nevada-U of, Las Vegas	<i>c</i> 1183	888	29	40	21	2	7	6	0	0
<i>p</i> Nevada-U of, Reno			DATA NOT PROVIDED							
NEW HAMPSHIRE										
<i>p</i> Dartmouth Coll	<i>c</i> 442	436	14	14	40	17	3	34	3	9
<i>p</i> New Hampshire-U of	1188	315	22	31	59	14	10	12	1	8
St. Anselm Coll	41	68	8	7				5		
NEW JERSEY										
Drew U	69	39	5	4				3		
Montclair State U	470	30	11	11				6		
New Jersey City U	210	70	6	5				1		
New Jersey-The Coll of	533	607	18	19				12		
<i>p</i> New Jersey Inst of Tech ⁽²⁾	899	291	11	16	28	18	12	—	3	4
<i>p</i> Princeton U	<i>s</i> 464	0	24	23	128	72	25	21	0	28
Ramapo Coll of NJ	330	211	13	10				6		
Rowan U	1398	509	46	59				38		
Rutgers U-Camden			DATA NOT PROVIDED							
<i>p</i> Rutgers U-New Brunswick	3159	850	68	111	114	53	12	75	0	12
<i>p</i> Rutgers U-Newark ⁽²⁾	642	100	0	6	2	0	1	6	0	0
St. Peter's U			DATA NOT PROVIDED							
<i>m</i> Seton Hall U	707	44	18	14	6	0	6	15	0	
<i>p</i> Stevens Inst of Tech	960	100	12	5	29	25	1	9	0	3
Stockton U	921	500	14	21				13		
NEW MEXICO										
<i>p</i> NM Inst of Mining & Tech	146	0	28	32	19	1	6	11	1	5
<i>p</i> New Mexico St U	<i>s</i>		DATA NOT PROVIDED							
<i>p</i> New Mexico-U of	1364	1410	32	53	101	43	15	14	4	15
NEW YORK										
Adelphi U	85	0	14	9				15		
Alfred U			DATA NOT PROVIDED							
Bard Coll	41	0	2	5				5		
Barnard Coll	<i>c</i> 96	125	3	7				7		
Canisius Coll	80	0	3	4				0		
<i>p</i> Clarkson U	1137	40	5	19	14	4	1	10	2	1
Colgate U	<i>c</i> 151	149	28	17				23		
<i>p</i> Columbia U	<i>s</i> 1935	149	32	53	99	52	12	42	0	25
<i>p</i> Columbia U (Appl Sci)			10	11	64	30	21	12	11	8
<i>p</i> Cornell U	<i>s</i> 2171	0	51	56	183	79	28	37	1	26
<i>p</i> Cornell U (Appl Sci)			29	27	79	37	16	22	4	14

(2) - U of Rutgers, Newark's graduate program is administered in partnership with the New Jersey Institute of Technology (NJIT).

INSTITUTION	2017-18 FIRST-TERM INTRODUCTORY COURSE ENROLLMENTS		FALL 2018 UNDERGRADUATE MAJORS		FALL 2018 GRADUATE STUDENTS			2017-18 PHYSICS DEGREES			
	PHYSICS	PHYSICAL SCI & ASTRONOMY	JR	SR	TOTAL	FOREIGN	FIRST YEAR	BACHELORS	EXITING MASTERS	PHDS	
NEW YORK CONTINUED											
(CUNY) Lehman Coll	0	60	8	13				10			
(CUNY) Staten Island-Coll of	DATA NOT PROVIDED										
(CUNY) York Coll	303	644	4	5				5			
<i>p</i> (CUNY) Grad Center*	GRADUATE ONLY				105	49	21			14	
<i>m</i> (CUNY) Brooklyn Coll*	780	230	7	7				4	0		
<i>m</i> (CUNY) City Coll*	1179	600	18	41				18	7		
<i>m</i> (CUNY) Hunter Coll*	1025	700	23	25				14	0		
<i>m</i> (CUNY) Queens Coll*	423	255	25	17				10	6		
Long Island U-C.W. Post	DATA NOT PROVIDED										
Fordham U	520	573	18	24				32			
Hamilton Coll	89	38	14	19				9			
Hartwick Coll	185	34	2	6				2			
Hobart & Wm Smith Coll	112	25	11	12				10			
Hofstra U	433	318	7	5				6			
Houghton Coll	89	31	6	2				4			
Iona Coll	DATA NOT PROVIDED										
Ithaca Coll	186	209	15	17				13			
Le Moyne Coll	137	30	14	12				8			
Manhattan Coll	1332	482	2	3				2			
Manhattanville Coll	73	23	1	3				0			
<i>p</i> New York U, School of Arts & Science	DATA NOT PROVIDED										
<i>m</i> New York U, Tandon Sch. of Engrg.	713	13	13	10	5	4	0	8	8		
Pace U-Pleasantville	DATA NOT PROVIDED										
<i>p</i> Rensselaer Polytech Inst	1077	55	46	53	40	5	12	29	6	7	
Roberts Wesleyan Coll	36	34	3	4				0			
<i>p</i> Rochester Inst of Tech	1572	118	41	47	30	6	4	17	2	4	
<i>p</i> Rochester-U of	<i>c</i> 691	92	30	18	113	32	17	19	0	14	
<i>p</i> Rockefeller U	GRADUATE ONLY				8	3	0		0	1	
St. Bonaventure U	42	42	3	4				1			
St. John Fisher Coll	123	0	3	4				4			
St. John's U	740	49	6	14				15			
St. Lawrence U	166	35	6	9				3			
Siena Coll	254	290	22	24				18			
Skidmore Coll	101	54	10	10				—			
SUNY Coll at Brockport	134	40	2	2				1			
SUNY Coll-Buffalo St Coll	479	0	4	4				4			
SUNY Coll at Cortland	DATA NOT PROVIDED										
SUNY Coll at Fredonia	156	87	12	6				11			
SUNY Coll at Geneseo	257	360	46	57				43			
SUNY Coll at New Paltz	<i>c</i> 862	332	10	9				8			
SUNY Coll at Oneonta	300	331	11	17				17			
SUNY Coll at Oswego	591	562	10	9				6			
SUNY Coll at Potsdam	162	103	8	9				7			
<i>p</i> SUNY-U at Albany	811	690	34	28	40	11	7	23	4	7	
<i>p</i> SUNY-Binghamton U	1720	453	26	28	42	18	6	25	1	2	
<i>p</i> SUNY-U at Buffalo	4984	467	14	26	101	64	13	15	3	7	
SUNY-Plattsburgh St U	204	90	10	12				3			
<i>p</i> SUNY-Stony Brook U	<i>c</i> 2171	99	89	142	218	165	64	60	11	22	
Stern Coll for Women	106	6	2	1				1			
<i>p</i> Syracuse U	940	788	14	10	83	43	11	16	3	10	
Union Coll	<i>c</i>	DATA NOT PROVIDED									
US Military Academy	643	0	18	12				20			
Utica Coll	142	16	0	4				0			
Vassar Coll	<i>c</i> 140	163	19	14				16			
Wagner Coll	98	188	1	4				1			
Wells Coll	32	0	0	1				2			
Yeshiva U	35	28	10	3				4			

*All CUNY graduate enrollment data are incorporated into CUNY Grad Center enrollments.

INSTITUTION	2017-18 FIRST-TERM INTRODUCTORY COURSE ENROLLMENTS		FALL 2018 UNDERGRADUATE MAJORS		FALL 2018 GRADUATE STUDENTS			2017-18 PHYSICS DEGREES		
	PHYSICS	PHYSICAL SCI & ASTRONOMY	JR	SR	TOTAL	FOREIGN	FIRST YEAR	BACHELORS	EXITING MASTERS	PHDS
NORTH CAROLINA										
<i>m</i> Appalachian State U	1074	287	36	46	27	2	9	27	27	
Davidson Coll	109	32	17	15				16		
<i>p</i> Duke U	—	—	14	13	78	41	—	13	2	13
<i>p</i> East Carolina U	DATA NOT PROVIDED									
Elon U	467	360	3	2				4		
Guilford Coll	68	24	2	2				5		
High Point U	155	100	8	9				6		
Lenoir-Rhyne Coll	DATA NOT PROVIDED									
<i>m</i> North Carolina A&T St U	57	11	9	10	4	1	0	4	2	
<i>m</i> North Carolina Central U	227	350	8	6	4	3	1	9	1	
<i>p</i> North Carolina St U	3335	429	41	72	135	76	28	27	2	9
NC-U of, Asheville	425	247	8	13				8		
<i>p</i> NC-U of, Chapel Hill	1346	611	48	64	76	10	9	33	3	9
<i>m</i> NC-U of, Charlotte	2060	198	23	60	9	4	1	21	9	
NC-U of, Greensboro	401	320	17	9				6		
NC-U of, Pembroke	127	383	5	7				4		
NC-U of, Wilmington	DATA NOT PROVIDED									
<i>p</i> Wake Forest U	650	199	13	19	30	12	9	28	1	8
NORTH DAKOTA										
<i>p</i> North Dakota St U	754	146	13	15	17	3	5	7	4	2
<i>p</i> North Dakota-U of	DATA NOT PROVIDED									
OHIO										
<i>p</i> Air Force Inst of Tech	GRADUATE ONLY				40	0	17		7	7
<i>m</i> Akron-U of	845	72	3	8	10	5	7	8	9	
Ashland U	56	124	0	0				2		
Baldwin-Wallace U	283	256	9	6				10		
Bluffton U	110	14	3	4				3		
<i>m</i> Bowling Green St U	882	995	3	14	14	6	8	6	6	
<i>p</i> Case Western Reserve U	<i>s</i> 758	0	32	42	56	31	10	29	4	7
Cedarville U	167	42	1	1				2		
<i>p</i> Cincinnati-U of	2336	433	12	9	51	27	9	12	7	10
<i>m</i> Cleveland State U	1113	138	10	11	12	1	6	4	9	
Dayton-U of	1514	17	2	4				6		
Denison U	82	107	13	9				11		
Hiram Coll	42	0	2	3				1		
John Carroll U	128	46	9	7				7		
<i>p</i> Kent State U	940	225	15	18	68	57	8	10	1	6
Kenyon Coll	78	48	20	13				11		
Marietta Coll	68	33	4	1				3		
<i>m</i> Miami U	2510	432	25	21	20	11	11	16	10	
Mount Union-U of	129	82	4	3				4		
Muskingum U	61	30	0	0				3		
Oberlin Coll	585	106	19	15				19		
Ohio Northern U	165	76	3	3				4		
<i>p</i> Ohio State U	<i>s</i> 2735	0	85	80	201	65	39	70	1	42
<i>p</i> Ohio U	1000	448	14	27	72	46	14	19	5	11
Ohio Wesleyan U	<i>c</i> 57	0	4	6				1		
Otterbein U	112	132	10	2				3		
<i>p</i> Toledo-U of	<i>c</i> —	—	14	28	66	49	15	11	1	7
Wittenberg U	72	35	13	3				4		
Wooster-Coll of	130	104	6	13				10		
<i>m</i> Wright State U	695	230	4	18	6	1	4	9	13	
Xavier U	482	106	9	11				11		
Youngstown State U	<i>c</i> 617	447	2	8				3		

INSTITUTION	2017-18 FIRST-TERM INTRODUCTORY COURSE ENROLLMENTS		FALL 2018 UNDERGRADUATE MAJORS		FALL 2018 GRADUATE STUDENTS			2017-18 PHYSICS DEGREES		
	PHYSICS	PHYSICAL SCI & ASTRONOMY	JR	SR	TOTAL	FOREIGN	FIRST YEAR	BACHELORS	EXITING MASTERS	PHDS
OKLAHOMA										
Cameron U	85	316	5	2				4		
East Central U	125	103	9	15				4		
Oklahoma Baptist U	101	58	4	7				1		
Oklahoma City U	DATA NOT PROVIDED									
<i>p</i> Oklahoma State U	1440	392	12	15	39	23	10	6	3	6
<i>p</i> Oklahoma-U of	^c 2177	560	22	30	85	43	17	10	1	3
Sci and Arts of OK-U of	22	192	2	2				2		
Southern Nazarene U	35	17	3	2				1		
Southwestern OK St U	259	330	6	9				5		
<i>p</i> Tulsa-U of	327	77	5	7	13	12	3	7	0	1
OREGON										
Lewis & Clark Coll	294	0	13	12				18		
Linfield Coll	65	0	4	8				9		
<i>p</i> Oregon State U	2027	806	41	65	39	10	11	36	3	7
<i>p</i> Oregon-U of	715	415	28	64	90	13	12	35	31	11
Pacific U	145	0	5	8				5		
<i>p</i> Portland State U	814	87	35	71	33	5	6	22	3	3
Portland-U of	350	96	3	8				6		
Reed Coll	120	0	20	21				26		
Willamette U	112	48	15	16				16		
PENNSYLVANIA										
Albright Coll	28	73	3	2				2		
Allegheny Coll	194	31	15	8				8		
Bloomsburg U of PA	260	474	4	8				8		
<i>p</i> Bryn Mawr Coll	146	0	12	11	6	1	2	16	0	1
Bucknell U	554	112	13	7				10		
California U of PA	360	96	4	1				1		
<i>p</i> Carnegie Mellon U	408	45	31	33	74	48	11	38	0	14
Clarion U of PA	126	339	4	9				6		
Dickinson Coll	85	17	5	15				8		
<i>p</i> Drexel U	2606	292	11	21	44	9	10	19	0	6
Duquesne U	533	507	10	16				13		
East Stroudsburg U	333	331	18	7				4		
Edinboro U of PA	335	34	1	1				5		
Elizabethtown Coll	265	79	0	2				3		
Franklin & Marshall Coll	270	90	14	14				14		
Geneva Coll	98	168	1	2				1		
Gettysburg Coll	222	154	11	16				13		
Grove City Coll	394	114	5	6				7		
Haverford Coll	^c 166	6	13	14				11		
<i>m</i> Indiana U of PA	307	308	4	9	2	1	1	8	3	
Juniata Coll	104	0	14	8				13		
King's Coll	123	43	11	16				9		
Kutztown U	249	186	7	15				15		

INSTITUTION	2017-18 FIRST-TERM INTRODUCTORY COURSE ENROLLMENTS		FALL 2018 UNDERGRADUATE MAJORS		FALL 2018 GRADUATE STUDENTS			2017-18 PHYSICS DEGREES		
	PHYSICS	PHYSICAL SCI & ASTRONOMY	JR	SR	TOTAL	FOREIGN	FIRST YEAR	EXITING		
								BACHELORS	MASTERS	PHDS
PENNSYLVANIA CONT'D										
Lafayette Coll	280	34	7	4				2		
Lebanon Valley Coll	—	—	—	8				6		
<i>p</i> Lehigh U	595	168	3	21	41	13	9	10	1	5
Lincoln U (PA)	96	350	4	3				0		
Lock Haven U	300	48	5	6				10		
Lycoming Coll	<i>c</i> 40	95	11	8				10		
Mercyhurst U	101	0	1	0				2		
Messiah Coll	141	0	2	2				3		
Millersville U	370	256	8	16				3		
Moravian Coll	130	80	3	7				7		
Muhlenberg Coll	115	70	7	6				9		
Pennsylvania St Behrend	1010	140	6	5				4		
<i>p</i> Pennsylvania St U	<i>s</i> 3649	0	60	80	150	86	29	50	2	12
<i>p</i> Pennsylvania-U of	493	34	14	111	106	48	19	47	14	15
<i>p</i> Pittsburgh-U of	<i>c</i> 2319	1102	35	47	117*	79*	20*	13	0	13
St. Josephs U	437	0	1	3				1		
St. Vincent Coll	264	56	6	6				1		
Scranton-U of	268	36	2	4				3		
Shippensburg U	496	279	8	13				15		
Slippery Rock U	961	79	14	19				8		
Susquehanna U	128	71	7	5				5		
Swarthmore Coll	<i>c</i> 103	81	16	4				11		
<i>p</i> Temple U	2768	45	21	14	60	45	8	13	2	10
The Sciences-U of	0	0	16	4				2		
Thiel Coll	25	40	1	0				1		
Ursinus Coll	112	20	7	9				9		
Villanova U	<i>s</i> 605	0	7	8				4		
Wash. & Jefferson Coll	81	25	6	7				6		
West Chester U	1506	111	35	39				15		
Westminster Coll	52	36	3	1				4		
Widener U	215	28	5	1				5		
Wilkes U	614	50	3	2				9		
PUERTO RICO										
Puerto Rico-U of, Humacao	171	84	11	30				7		
<i>m</i> Puerto Rico-U of, Mayaguez	1686	165	12	14	24	17	3	9	5	
<i>p</i> Puerto Rico-U of, Rio Piedras	35	20	12	9	36	20	2	7	3	8
RHODE ISLAND										
<i>p</i> Brown U	479	118	29	25	136	90	41	35	20	10
Providence Coll	460	0	2	2				2		
Rhode Island Coll	DATA NOT PROVIDED									
<i>p</i> Rhode Island-U of	558	177	7	12	18	7	5	4	0	2
SOUTH CAROLINA										
Benedict Coll	DATA NOT PROVIDED									
Bob Jones U	86	114	2	1				2		
Charleston-Coll of	<i>c</i> 665	466	16	16				17		
Citadel-The	1061	59	4	6				6		
<i>p</i> Clemson U	2335	404	17	28	73	44	18	15	1	8
Coastal Carolina U	488	248	12	7				8		
Francis Marion U	161	156	8	6				3		
Furman U	243	74	10	13				18		
Presbyterian Coll	117	48	9	11				6		
South Carolina St U	90	217	1	0				1		
<i>p</i> South Carolina-U of	1669	434	23	19	40	14	7	3	1	3
Wofford Coll	239	0	5	7				5		

*U of Pittsburgh - includes graduate-level astronomy enrollments

INSTITUTION	2017-18 FIRST-TERM INTRODUCTORY COURSE ENROLLMENTS		FALL 2018 UNDERGRADUATE MAJORS		FALL 2018 GRADUATE STUDENTS			2017-18 PHYSICS DEGREES		
	PHYSICS	PHYSICAL SCI & ASTRONOMY	JR	SR	TOTAL	FOREIGN	FIRST YEAR	BACHELORS	EXITING MASTERS	PHDS
SOUTH DAKOTA										
Augustana U	89	27	7	5				2		
<i>p</i> SD Sch of Mines & Tech	400	0	6	12	21	6	3	3	0	2
South Dakota St U	783	24	2	4				4		
<i>p</i> South Dakota-U of	0	180	3	3	19	14	3	3	0	1
TENNESSEE										
Austin Peay St U	378	842	18	17				8		
Belmont U			DATA NOT PROVIDED							
Christian Brothers U	151	30	2	1				3		
East Tennessee St U	732	264	13	4				7		
<i>m</i> Fisk U			DATA NOT PROVIDED							
King U	25	27	3	2				4		
Lane Coll	41	372	0	0				0		
Lipscomb U	283	0	3	2				2		
<i>m</i> Memphis-U of	731	393	9	11	21	14	14	6	5	
Middle Tennessee St U	798	1483	13	24				19		
Rhodes Coll	81	32	12	12				13		
Southern Adventist U	81	170	2	2				3		
South-U of the			DATA NOT PROVIDED							
Tennessee Tech U	556	68	6	4				1		
TN-U of, Chattanooga	285	529	9	7				9		
<i>p</i> TN-U of, Knoxville ⁽³⁾	1662	775	37	71	130	58	22	14	7	11
<i>p</i> TN-U of, Space Inst ⁽³⁾			GRADUATE ONLY							
Trevecca Nazarene U	27	37	4	9				3		
Union U	48	142	2	2				4		
<i>p</i> Vanderbilt U	421	235	12	22	65	10	13	8	0	8
TEXAS										
Abilene Christian U	149	389	2	3				7		
Angelo State U	569	960	8	28				18		
Austin Coll	96	36	8	4				9		
<i>p</i> Baylor U	1674	458	10	10	42	24	9	6	2	4
Dallas-U of	120	120	10	14				9		
Houston Baptist U	110	30	4	1				0		
<i>p</i> Houston-U of	4243	606	33	34	105	60	22	23	1	16
<i>m</i> Houston-U of, Clear Lake	235	104	14	23	21	1	7	8	5	
Lamar U	929	57	6	17				6		
McMurry U	50	26	15	7				1		
Midwestern State U ⁽⁴⁾			DATA NOT PROVIDED							
<i>p</i> North Texas-U of			DATA NOT PROVIDED							
Prairie View A&M U ⁽⁴⁾	2714	0	2	0				0		
<i>p</i> Rice U ^c	431	261	13	19	99	66	16*	20	1	15
St. Mary's U	450	0	8	6				5		
Sam Houston St U	192	529	12	20				7		
<i>p</i> Southern Methodist U	679	0	3	6	17	7	4	5	0	4
Southwestern U			DATA NOT PROVIDED							
<i>m</i> Stephen F Austin St U	220	1027	17	7	0	0	0	14	0	

(3) - Data for the degree program at University of Tennessee, Space Institute are included with U. of TN, Knoxville

(4) - Part of the Texas Physics Consortium.

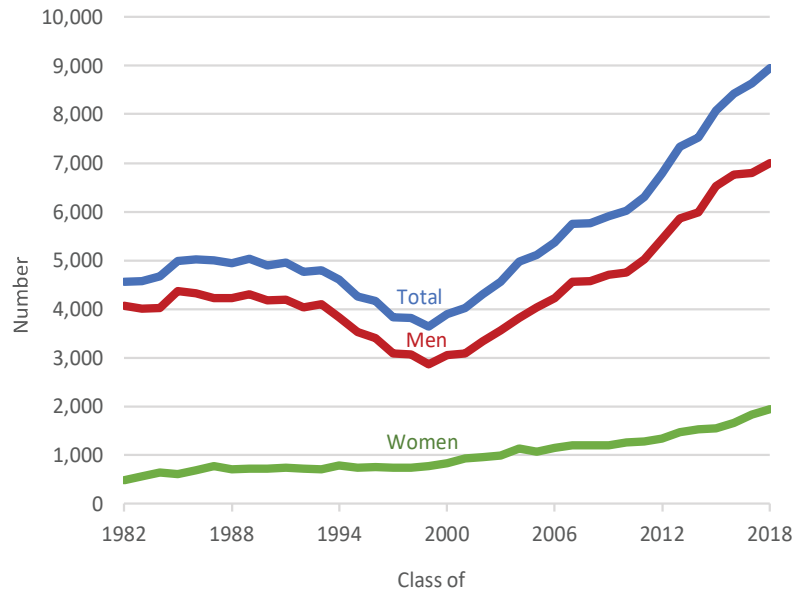
*Rice University's first-year graduate student number includes both physics and astronomy students.

INSTITUTION	2017-18 FIRST-TERM INTRODUCTORY COURSE ENROLLMENTS		FALL 2018 UNDERGRADUATE MAJORS		FALL 2018 GRADUATE STUDENTS			2017-18 PHYSICS DEGREES		
	PHYSICS	PHYSICAL SCI & ASTRONOMY	JR	SR	TOTAL	FOREIGN	FIRST YEAR	BACHELORS	EXITING MASTERS	PHDS
TEXAS CONTINUED										
Tarleton State U	(4)	487	101	5	7				4	
p Texas A&M-College Station	c	3472	370	45	33	142	79	31	26	3 28
m Texas A&M-Commerce	(4)	151	340	13	20	67	—	24	8	15
Texas A&M-Corpus Christi	(4)	DATA NOT PROVIDED								
Texas A&M-Kingsville	(4)	630	379	4	3				3	
p Texas Christian U	c	503	653	4	8	18	7	4	6	0 3
Texas Lutheran U		72	0	1	9				2	
Texas Southern U	(4)	707	124	4	3				9	
m Texas State U		3053	592	27	54	28	9	6	18	7
p Texas Tech U		2233	767	41	78	49	32	8	19	12 5
p Texas-U of, at Arlington		—	—	—	—	60	21	12	—	2 6
p Texas-U of, at Austin	s	2210	1083	88	178	193	92	29	93	2 34
m Texas-U of, Rio Grande Valley		1923	1718	21	38	28	21	14	7	5
p Texas-U of, at Dallas		DATA NOT PROVIDED								
m Texas-U of, at El Paso		1007	593	41	35	22	13	9	13	10
p Texas-U of, at San Antonio		1090	560	34	65	46	17	10	22	4 17
Trinity U		135	93	6	6				7	
West Texas A&M U	(4)	DATA NOT PROVIDED								
UTAH										
p Brigham Young U		2470	4130	61	119	41	5	12	54	6 4
p Utah State U		1209	459	21	56	34	4	7	20	1 2
p Utah-U of		—	—	—	—	69	40	0	—	4 9
Utah Valley U		DATA NOT PROVIDED								
Weber State U		1018	544	44	62				5	
Westminster Coll		95	23	5	7				2	
VERMONT										
Marlboro Coll	c	2	1	2	0				0	
Middlebury Coll		234	0	17	14				15	
Norwich U		202	51	2	4				4	
St. Michael's Coll		61	40	2	4				2	
m Vermont-U of		1050	473	13	16	18	11	5	7	0
VIRGIN ISLANDS										
Virgin Islands-U of the		86	239	5	3				0	
VIRGINIA										
Bridgewater Coll		69	44	10	5				10	
m Christopher Newport U		DATA NOT PROVIDED								
Emory & Henry Coll		53	18	4	1				1	
P George Mason U	c	1330	1554	26	42	60	16	12	20	9 5
Hampden-Sydney Coll		212	103	11	5				7	
p Hampton U		—	—	2	4	15	11	1	1	1 1
James Madison U		1154	1164	21	19				15	
Longwood U		386	50	13	6				5	
Lynchburg-U of		90	40	5	2				1	
Mary Baldwin U		DATA NOT PROVIDED								
Mary Washington-U of		203	177	11	16				6	
Norfolk State U		97	289	0	2				0	
p Old Dominion U		1233	605	17	29	52	26	8	7	3 1

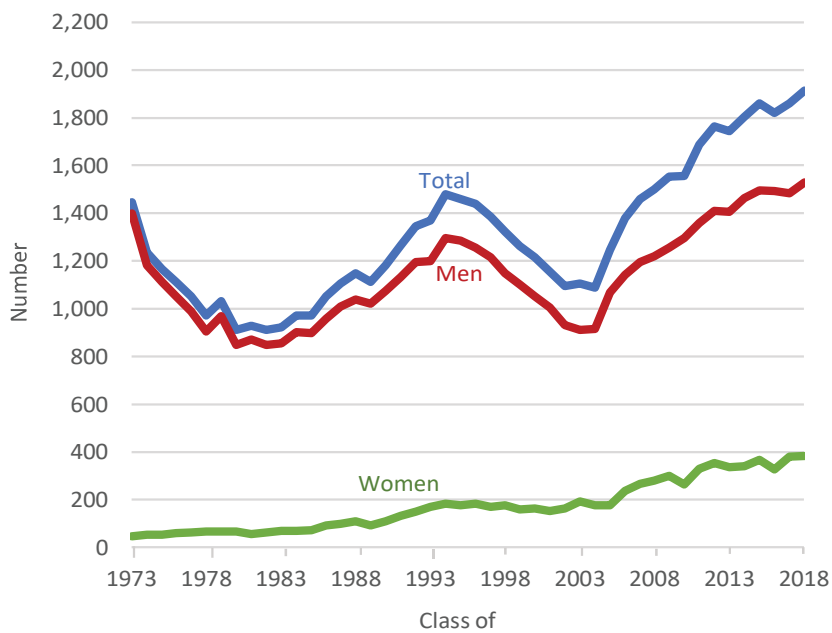
(4) - Part of the Texas Physics Consortium.

INSTITUTION	2017-18 FIRST-TERM INTRODUCTORY COURSE ENROLLMENTS		FALL 2018 UNDERGRADUATE MAJORS		FALL 2018 GRADUATE STUDENTS			2017-18 PHYSICS DEGREES		
	PHYSICS	PHYSICAL SCI & ASTRONOMY	JR	SR	TOTAL	FOREIGN	FIRST YEAR	BACHELORS	EXITING MASTERS	PHDS
VIRGINIA CONTINUED										
Radford U	198	172	7	19				3		
Randolph-Macon Coll	77	0	3	2				2		
Randolph Coll	92	40	13	10				7		
Richmond-U of	159	0	12	13				16		
Roanoke Coll	133	50	10	11				6		
<i>m</i> Virginia Commonwealth U	2995	2719	36	69	11	0	0	18	2	
Virginia Military Inst	378	63	8	19				11		
<i>p</i> Virginia Polytech Inst & St U	3143	615	85	72	86	58	18	67	3	7
Virginia Union U	0	0	4	0				0		
<i>p</i> Virginia-U of	<i>s</i> 1765	0	36	51	107	68	14	59	1	7
Washington & Lee U	218	0	3	4				5		
<i>p</i> William & Mary-Coll of	316	156	22	47	54	18	8	30	2	12
WASHINGTON										
Central Washington U	441	79	30	41				22		
Eastern Washington U	386	190	3	5				5		
Gonzaga U	572	76	5	5				3		
Pacific Lutheran U	177	26	16	13				13		
Puget Sound-U of	351	51	7	13				12		
Seattle Pacific U	DATA NOT PROVIDED									
Seattle U	274	112	7	6				7		
Walla Walla U	175	3	3	8				3		
<i>p</i> Washington State U	1395	500	9	24	48	21	3	8	3	5
<i>p</i> Washington-U of	<i>s</i> 2988	0	123	282	202	35	53	174	9	15
Western Washington U	1084	397	22	25				23		
Whitman Coll	<i>s</i> 202	57	10	10				12		
Whitworth U	122	70	18	20				19		
WEST VIRGINIA										
Marshall U	574	206	6	5				3		
<i>p</i> West Virginia U	1846	440	17	26	75	32	12	13	1	9
West Virginia Wesleyan Coll	79	43	15	20				17		
Wheeling Jesuit U	DATA NOT PROVIDED									
WISCONSIN										
Beloit Coll	67	0	4	12				13		
Carroll U	179	40	2	2				1		
Carthage Coll	251	25	11	14				7		
Lawrence U	120	0	6	16				7		
Marquette U	1000	176	13	8				15		
Ripon Coll	22	17	0	4				1		
St. Norbert Coll	80	45	1	6				5		
Wisconsin Lutheran Coll	DATA NOT PROVIDED									
WI-U of, Eau Claire	535	742	10	13				26		
WI-U of, La Crosse	910	239	30	27				28		
<i>p</i> WI-U of, Madison	<i>s</i> 1568	0	28	94	184	56	28	51	5	19
<i>p</i> WI-U of, Milwaukee	2541	150	12	21	39	20	6	8	3	6
WI-U of, Oshkosh	157	186	11	10				3		
WI-U of, Parkside	135	40	3	15				5		
WI-U of, River Falls	319	417	24	41				27		
WI-U of, Stevens Point	417	324	9	8				8		
WI-U of, Whitewater	363	143	15	8				7		
WYOMING										
<i>p</i> Wyoming-U of	<i>c</i> 912	354	12	18	42	14	8	13	3	2

**Number of Bachelor's Degrees Earned in Physics,
Classes 1982 through 2018.**



Number of Doctorates Earned in Physics, Classes 1973 through 2018.



e-Updates

You can sign up to receive e-mail alerts that notify you when we post a new report or resource. Visit www.aip.org/statistics/e_updates to sign up. We will send you an e-Update only when we post something new. You should receive no more than 20 messages in a year.

Follow Us on Twitter

The Statistical Research Center is your source for data on education, careers, and diversity in physics, astronomy and other physical sciences. Follow us at [@AIPStatistics](https://twitter.com/AIPStatistics).

Roster of Physics Departments with Enrollment and Degree Data, 2018

By Starr Nicholson and Patrick Mulvey

Published: September 2019

Revised October 2019

A product of the Statistical Research Center of the American Institute of Physics
1 Physics Ellipse, College Park, MD 20740